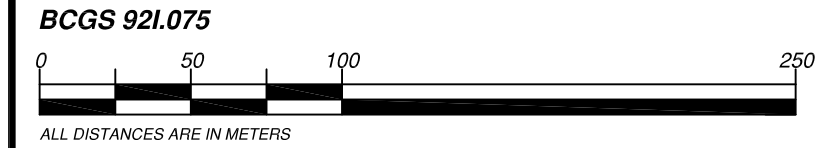


**REFERENCE PLAN OF EASEMENT
OVER A PORTION OF
LOT 35, SECTIONS 7 AND 18, Tp. 21, Rge.
22, W6M, KDYD, PLAN 1266
AND
NE 1/4, Sec. 7, Tp. 21, Rge. 22, W6M,
KDYD, EXCEPT PLANS 1266 AND H686**

PURSUANT TO SECTION 99(1)(e) OF THE LAND TITLE ACT



THE INTENDED PLOT SIZE OF THIS PLAN IS 864mm IN WIDTH BY 560mm IN HEIGHT (D SIZE) WHEN PLOTTED AT A SCALE OF 1:2500.

GRID BEARINGS ARE DERIVED FROM GNSS DUAL FREQUENCY STATIC BASELINE OBSERVATION BETWEEN OIP 227 AND REBAR 500 AND ARE REFERRED TO THE CENTRAL MERIDIAN OF UTM ZONE 10.

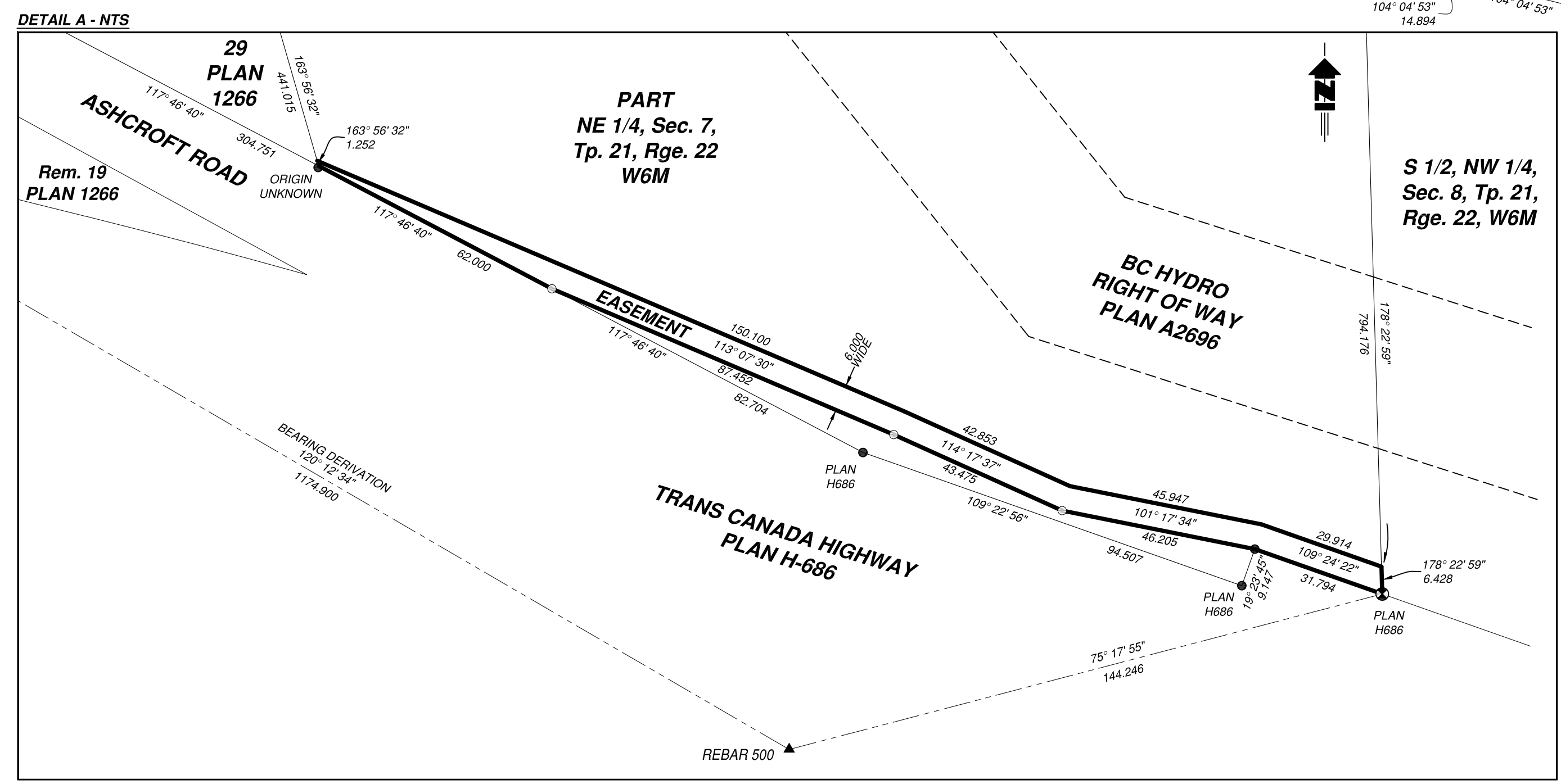
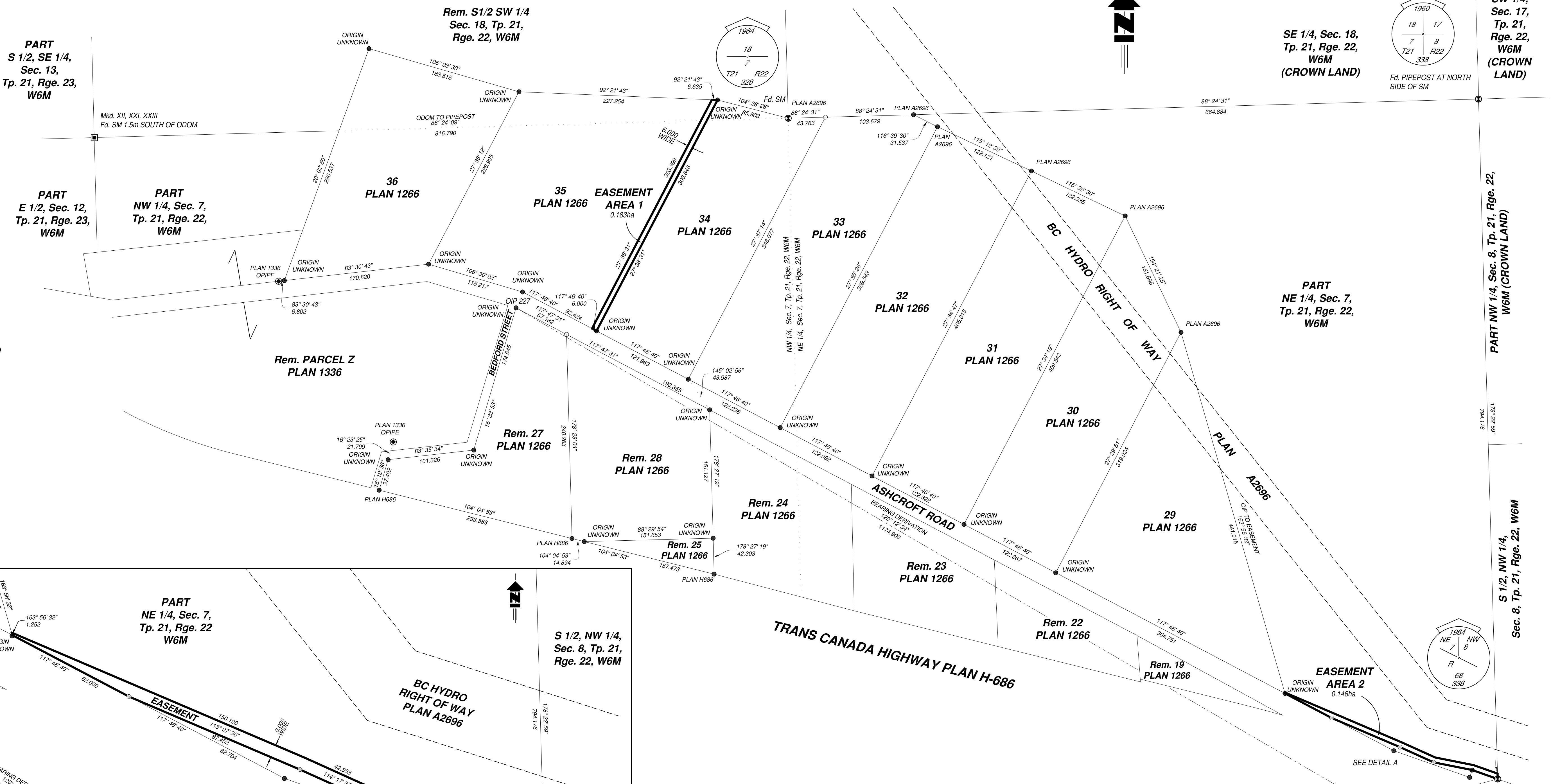
THE UTM COORDINATES AND ESTIMATED ABSOLUTE ACCURACY ACHIEVED ARE DERIVED FROM 7 HOURS OF DUAL FREQUENCY GNSS OBSERVATIONS POST PROCESSED USING NATURAL RESOURCE CANADA'S PRECISE POINT POSITIONING (PPP) SERVICE.

THIS PLAN SHOWS HORIZONTAL GROUND-LEVEL DISTANCES UNLESS OTHERWISE SPECIFIED. TO COMPUTE GRID DISTANCES, MULTIPLY GROUND-LEVEL DISTANCES BY THE AVERAGE COMBINED FACTOR OF 0.99977320. THE AVERAGE COMBINED FACTOR HAS BEEN DETERMINED BASED ON A MEAN ELLIPSOIDAL ELEVATION OF 394.32m.

- LEGEND**
- STANDARD IRON POST FOUND
 - STANDARD IRON POST PLACED
 - ⊙ STANDARD CAPPED POST FOUND
 - ⊕ NON-STANDARD POST (DESCRIBE)
 - ⊙ OLD PATTERN DOMINION IRON POST FOUND
 - ⊙ GNSS CONTROL POINT FOUND
 - ha DENOTES HECTARES
 - Fd. DENOTES FOUND
 - SM DENOTES STONE MOUND
 - Mkd. DENOTES MARKED

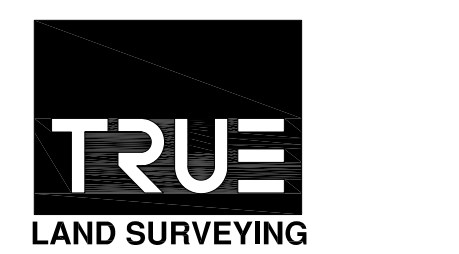
THIS PLAN LIES WITHIN THE THOMPSON-NICOLA REGIONAL DISTRICT.

THE FIELD SURVEY REPRESENTED BY THIS PLAN WAS COMPLETED ON THE 5th DAY OF JULY, 2021. MATHEW JACCARD, BCLS (1016).



AREA	DESCRIPTION	AREA
1	LOT 35 PLAN 1266	0.183ha
2	E 1/4 Sec. 7, Tp. 21, Rge. 22, W6M	0.146ha
TOTAL		0.329ha

POINT	NORTHING	EASTING	COMBINED FACTOR	ESTIMATED ABSOLUTE ACCURACY
227	5626948.434	637973.034	0.99976976	0.01
500	5626357.404	638988.144	0.99977768	0.01



201 - 2079 Falcon Road ■ Kamloops BC ■ V2C 4J2
tel 250.828.0881 ■ fax 250.828.0717
info-kam@TRUE.bc.ca
DRAWN BY: MJ
JOB NO: 1619-071-HS
JOB NO: 1619-071