

SUBDIVISION PLAN OF DL 1909s, SIMLKAMEEN DIVISION YALE DISTRICT EXCEPT PLAN 39905

80x85 82x75 100 150 ALL DISTANCES ARE IN METERS

THE INTENDED PLOT SIZE OF THIS PLAN IS 80m IN WIDTH BY 110m IN HEIGHT (E 502) WHEN PLOTTED AT A SCALE OF 1:1500

GRID BEARINGS ARE DERIVED FROM GNSS DUAL FREQUENCY STATIC BASELINE OBSERVATION BETWEEN REBAR 501 AND MAGNAN 501 AND ARE REFERRED TO THE CENTRAL MERIDIAN OF UTM ZONE 11.

THE UTM COORDINATES AND ESTIMATED ABSOLUTE ACCURACY ACHIEVED ARE DERIVED FROM 7 HOURS OF DUAL FREQUENCY GNSS OBSERVATIONS POST PROCESSED USING NATURAL RESOURCE CANADA'S PRECISION POINT POSITIONING (PPP) SERVICE.

THIS PLAN SHOWS HORIZONTAL GROUND-LEVEL DISTANCES UNLESS OTHERWISE SPECIFIED TO COMPUTE GRID DISTANCES. MULTIPLY GROUND-LEVEL DISTANCES BY THE AVERAGE COMBINED FACTOR OF 0.9997171. THE AVERAGE COMBINED FACTOR HAS BEEN DETERMINED BASED ON A MEAN ELLIPSOIDAL ELEVATION OF 1000.55m.

- LEGEND: STANDARD IRON POST FOUND, STANDARD IRON POST PLACED, STANDARD CAPPED POST FOUND, DENOTES WITNESS, DENOTES NOTHING FOUND, DENOTES HECTARES, DENOTES METRES SQUARED, DENOTES PINE POST, DENOTES IRON PIN, DENOTES STONE MOUND, DENOTES BEARING TREE, GNSS CONTROL POINT PLACED, UNMONUMENTED SURVEY POINT, DENOTES ILL-LEGIBLE, DENOTES REFERENCE PIN, DENOTES RE-ESTABLISHED

THIS PLAN SHOWS ONE OR MORE WITNESS POSTS WHICH ARE NOT SET ON THE TRUE CORNER(S).

THIS PLAN LIES WITHIN THE JURISDICTION OF THE APPROVING OFFICER FOR THE MINISTRY OF TRANSPORTATION AND INFRASTRUCTURE JURISDICTION FILE # 2020-04416

TWO COVENANTS IN THE NAME OF HIS MAJESTY THE KING IN RIGHT OF THE PROVINCE OF BRITISH COLUMBIA AS REPRESENTED BY THE MINISTER OF TRANSPORTATION AND INFRASTRUCTURE AND THE REGIONAL DISTRICT OF KOOTENAY BOUNDARY, PURSUANT TO SECTION 219 OF THE LAND TITLE ACT, ARE A CONDITION OF APPROVAL FOR THIS SUBDIVISION.

A COVENANT IN THE NAME OF THE INTERIOR HEALTH AUTHORITY, PURSUANT TO SECTION 219 OF THE LAND TITLE ACT, IS A CONDITION OF APPROVAL FOR THIS SUBDIVISION.

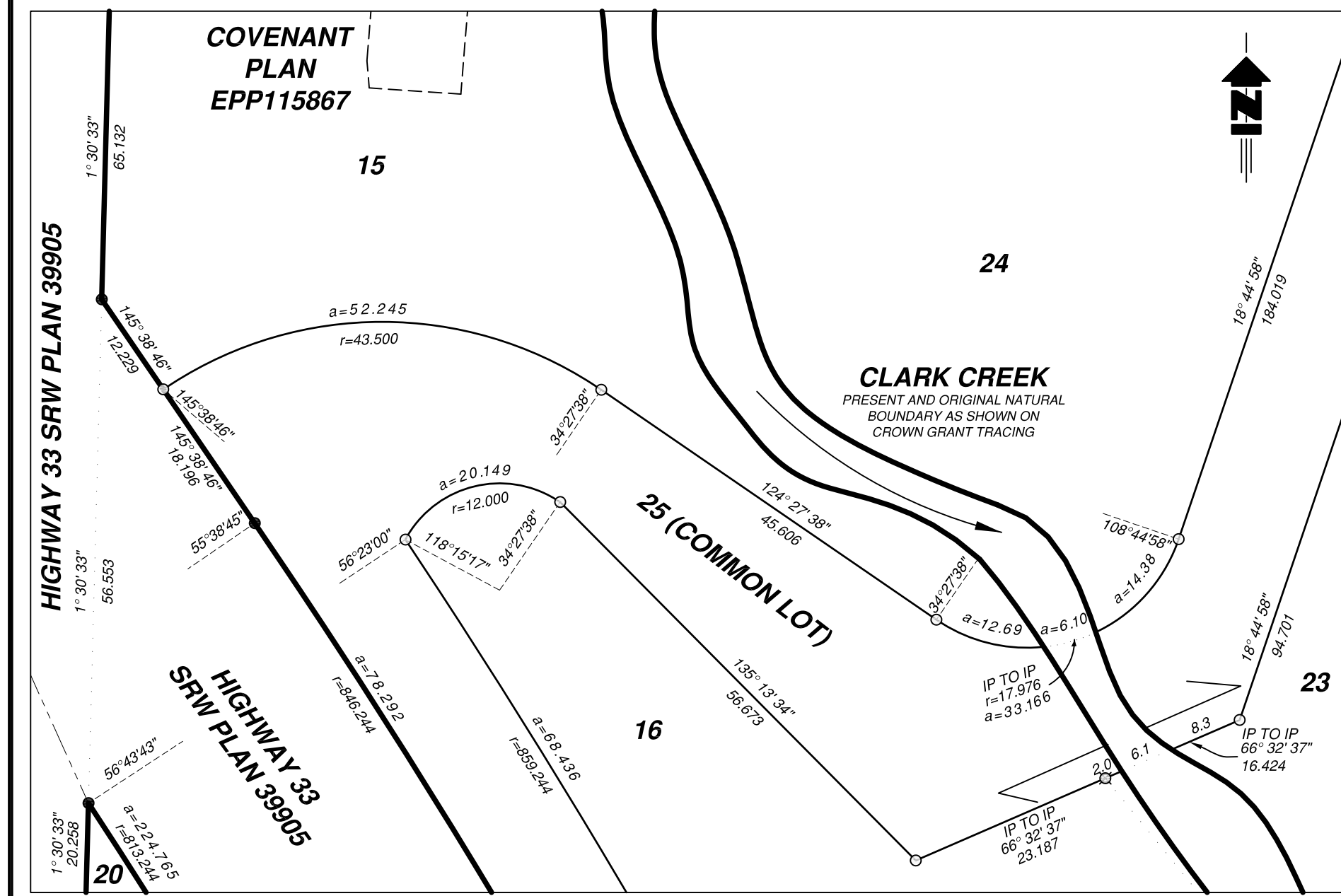
A COVENANT IN THE NAME OF HIS MAJESTY THE KING IN RIGHT OF THE PROVINCE OF BRITISH COLUMBIA AS REPRESENTED BY THE MINISTER OF TRANSPORTATION AND INFRASTRUCTURE, PURSUANT TO SECTION 219 OF THE LAND TITLE ACT, IS A CONDITION OF APPROVAL FOR THIS SUBDIVISION.

A COVENANT IN THE NAME OF HIS MAJESTY THE KING IN RIGHT OF THE PROVINCE OF BRITISH COLUMBIA AS REPRESENTED BY THE MINISTER OF FORESTS, PURSUANT TO SECTION 219 OF THE LAND TITLE ACT, IS A CONDITION OF APPROVAL FOR THIS SUBDIVISION.

ACCESS TO LOTS 14, 15 AND 21 TO 24 ARE BY COMMON LOT.

BEARINGS TO BEARING TREES ARE MAGNETIC.

SEE DETAIL A - NTS



ALLOTMENT TABLE FOR THE APPORTIONMENT OF LOT 25. Table with columns: LOT, DISTRICT LOT, UNDIVIDED SHARE. Rows for lots 14, 15, 21, 22, 23, 24.

TABLE OF CONTROL MONUMENTS. Table with columns: POINT, NORTHING, EASTING, COMBINED FACTOR, ESTIMATED ABSOLUTE ACCURACY. Rows for points 500 and 501.

THIS PLAN LIES WITHIN THE REGIONAL DISTRICT OF KOOTENAY BOUNDARY. THE FIELD SURVEY REPRESENTED BY THIS PLAN WAS COMPLETED ON THE 15th DAY OF OCTOBER, 2021. MATHEW JACCORD, BCLS (1016).

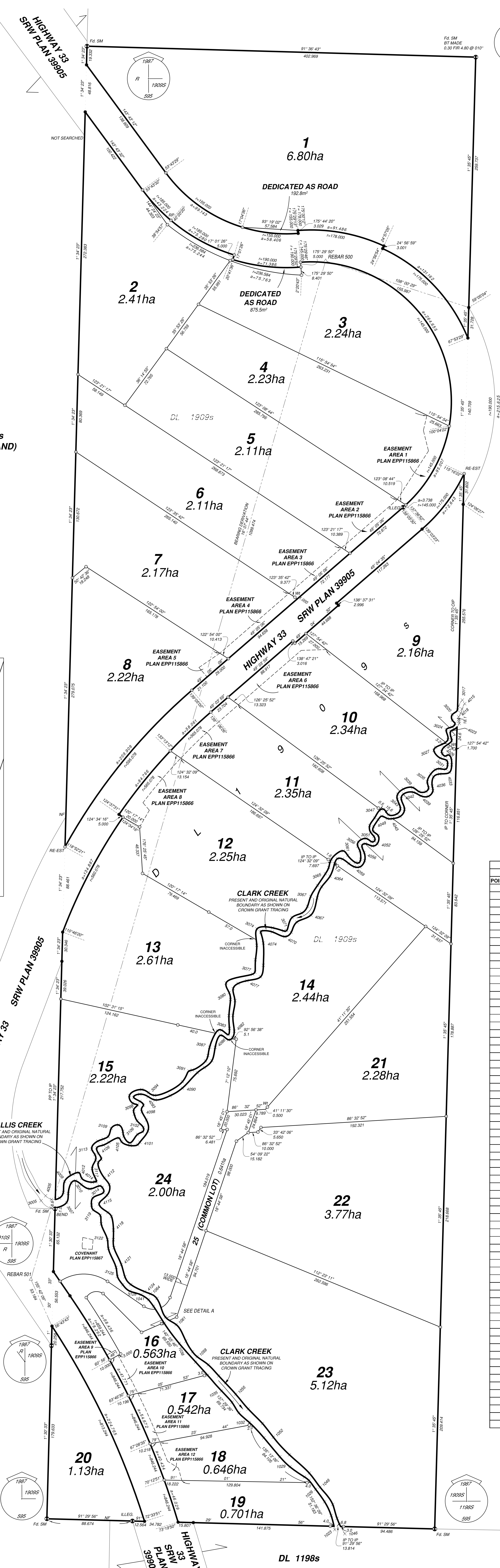


TABLE OF PRESENT NATURAL BOUNDARY COORDINATES. Table with columns: POINT #, NORTHING, EASTING, POINT #, NORTHING, EASTING, POINT #, NORTHING, EASTING, POINT #, NORTHING, EASTING. Lists coordinates for various points along the natural boundaries.

